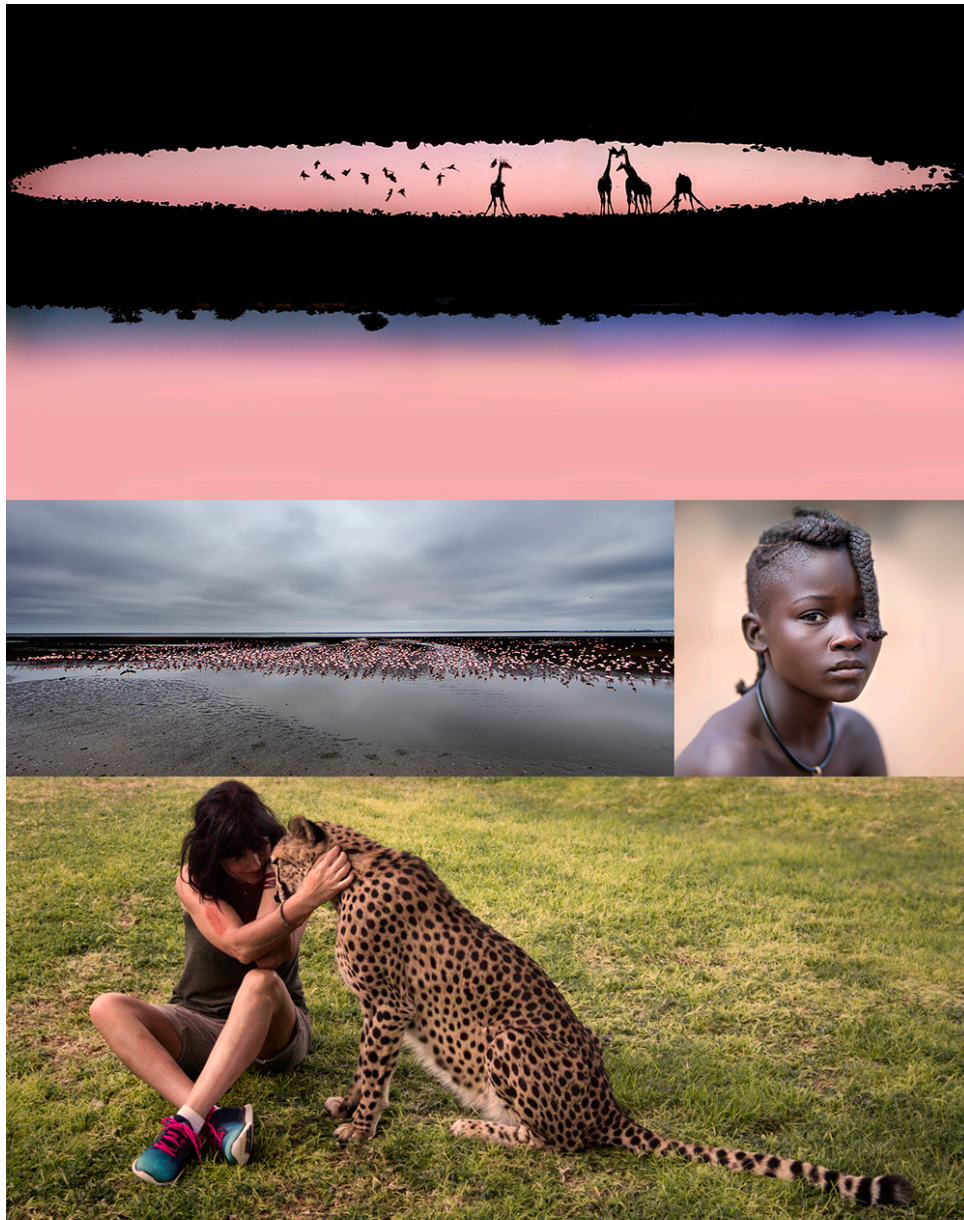


PHOTO SAFARI with MARINA CANO & MIKE FISHER

Namibia 3-13 April 2016



Included: Accommodation as per itinerary, and transport.

Excluded: Meals and activities not specified in the itinerary, drinks, travel insurance, flights to / from Windhoek, staff gratuities (at your discretion).

Summary

03 Apr 2016 - 04 Apr 2016	Arrival into Windhoek and transfer to your hotel Accommodation: Kalahari Sands Hotel (Dinner, bed and breakfast)
04 Apr 2016 - 05 Apr 2016	Transfer to Walvis Bay in 2 x Land Cruisers Afternoon photography of flamingoes Accommodation: Oyster Box Guesthouse, Walvis Bay (Lunch, bed and breakfast)
05 Apr 2016 - 07 Apr 2016	Morning kayaking excursion / depart for Erindi Lunch and afternoon game drive Accommodation: Erindi Private Game Reserve in Luxury Rooms (Full Board including all meals and lodge activities)
07 Apr 2016 - 09 Apr 2016	Depart for the Etosha National Park Accommodation: Okaukuejo Camp in Waterhole Chalets (Full Board including all meals and game drives with your guides)
09 Apr 2016 - 10 Apr 2016	Transfer to Dolomite Camp Accommodation: Dolomite Camp in Bush Chalets (Full Board including all meals and game drives with your guides)
10 Apr 2016 - 12 Apr 2016	Transfer to Halali Accommodation: Halali Resort in Double Rooms (Full Board including all meals and game drives with your guides)
12 Apr 2016 - 13 Apr 2016	Check out and drive back to Windhoek / overnight Accommodation: Kalahari Sands Hotel (Dinner, bed and breakfast)
13 Apr 2016	Transfer to the airport

DAY 1 (03 APRIL 2016)

Arrival into Windhoek.

You'll be met on arrival and transferred to your hotel, about 45 mins away. Note that you can check in to your rooms from 2pm onwards.

Kalahari Sands Hotel

Refurbished in 2004 and in the centre of Windhoek's bustling central business district, (CBD) is the renowned 4-star Kalahari Sands Hotel and Casino. This is a good value destination, considering the amenities, facilities and level of comfort you can expect from a hotel of this class. This luxurious hotel is very conveniently located on Independence Avenue, with banks, restaurants and shops of every description in the adjoining and nearby shopping centres.

There is a full range of guest services and amenities, including concierge, baby sitting, barber/beauty shop, boutiques, coffee shop, florist, safe, jacuzzi, guest laundromat, laundry / dry cleaning service, paid on-site parking/security and a 24hr room and wake-up service.

The Dunes Restaurant and the Oasis bar lounge, with its terrace overlooking Independence Avenue, serves an all-day buffet and guests can also order from the 'a la carte' menu.



Kalahari Sands Hotel (Dinner, Bed & Breakfast)

DAY 2 (04 APRIL 2016)

This morning – set off for Walvis Bay at the coast in 2 Land Cruiser vehicles.

A lunch stop will be made en route (lunch for your own account). Photograph the flamingoes this afternoon before checking in at your hotel.

Thirty kilometres south of Swakopmund lies Walvis Bay, where the protected lagoon is often inundated with pink Greater Flamingo. Walvis Bay Lagoon is one of the most valuable wetland sites along the entire west coast of Africa. This haven is a phenomenal spectacle which often supports more than 150 000 birds.

Dinner own account, transfer you to a local restaurant this evening.

Oyster Box Guesthouse

Located on Walvis Bay's beautiful Lagoon, Oyster Box Guesthouse offers 12 rooms of classic comfort for holiday tourists, business people, families, and water sports enthusiasts.

The Lagoon is a RAMSAR site and indeed the most important coastal wetland in southern Africa. It is home to a large numbers of resident species and way station for African and Palearctic migrant birds. It is also famous for its thousands of Lesser and Greater Flamingo, and has been listed by RAMSAR as a natural heritage site. Although there are many rare and special species, it's the sheer number and diversity, especially of visiting migrants, that is a major attraction.

After partaking in Oyster Box's hearty breakfast, you can unwind on our open deck and spend the day soaking up the African sun.



Oyster Box Guesthouse (Lunch, bed and breakfast)

DAY 3 (05 APRIL 2016)

Check out and enjoy the morning kayaking excursion. Paddle out to Pelican Point which is sanctuary to a huge variety of birds, plankton species, fish life, dolphins and every so often whales can be spotted.

For the lucky few, perhaps a glimpse of a mother whale and her calf, the Humpback and Southern Right Whales are known to frequent the wetland. We will visit the Pelican Point seal colony with a population between 15'000 and 20'000 Cape Fur Seals. These seals have no natural predators in the water and are keen to approach the kayaks. Perhaps the infamous but shy Black-Backed Jackal will make a brief appearance.

After this activity we proceed to Erindi Private Game Reserve, where we will arrive in the late afternoon.

Erindi Private Game Reserve

The ultimate bush luxury in an environment geared up for relaxed game viewing. Erindi comprises of 70,719 ha of pristine wilderness, and presents an amazing array of diverse landscapes - from golden savannah to dense bush with mountains, natural waterholes, grasslands and pans.

The perfect base for your forays into the exhilarating bush, our spacious luxury suites have all the charm, comfort and conveniences you'd expect of a top-flight resort suite. The

luxury rooms are spacious and have a view of the smaller waterhole. The bathrooms are en suite.



Erindi Private Game Reserve in Luxury Rooms (Full Board including all meals and game viewing with your guides)

DAY 4 (06 APRIL 2016)

Game viewing in the Erindi Private Game Reserve.

Guests are treated to a world-class informative game drive. Roam the expansive landscape of the Erindi Game Reserve with a qualified and knowledgeable guide in the comfort of an open 4x4 vehicle.

Erindi Private Game Reserve in Luxury Rooms (Full Board including all meals and game viewing with your guides)

DAY 5 (07 APRIL 2016)

Check out and drive north towards the Etosha National Park. Check in at Okaukuejo Camp – afternoon game viewing in the park with your guides.

Okaukuejo Camp

Famous for its floodlit waterhole Okaukuejo Rest Camp is also the administrative centre of Etosha. Most visitors travel through this camp with its characteristic stone tower and Etosha Ecological Institute is also situated within the camp.

The rest camp was formerly a military outpost founded in 1901 and the tower was added in 1963. Located in the south of Etosha National Park, Okaukuejo is only 17 km from Anderson Gate. Okaukuejo offers a wide range of accommodation as well as all the necessities such as a petrol station and a shop. The restaurant and bar offer refreshments and delicious meals, while the swimming pool offers relief on hot days. The waterhole is a hub of animal activity starting in the early hours of the morning.

The Waterhole Chalets perfectly situated overlooking the popular waterhole allowing guests to view game from their patio or balcony. These units are en-suite and are available as double rooms or premier chalets with two bedrooms.



Okaukuejo Camp in Waterhole Chalets (Full Board including all meals and game viewing with your guides)

DAY 6 (08 APRIL 2016)

Game viewing in Etosha.

It is hardly a secret that Etosha's best game viewing is at the many waterholes scattered throughout the park. Especially during the dry winters most species rely on these permanent water sources. The larger waterholes see large treks of zebra and springbok mingle with Oryx and bathing elephants. Some of the camps even offer floodlit waterholes, where you can spot rhino, elephant and lion drinking from the same waterhole.

Etosha National Park is home to four of the Big 5. Elephants and lions are common in the park, while the elusive leopard hides in the densely vegetated areas. However, one of the best reasons to visit Etosha is its healthy population of black rhinoceros. This archaic beast is endangered and the waterholes are probably among the best places in the world to see this precious animal.

Okaukuejo Camp in Waterhole Chalets (Full Board including all meals and game viewing with your guides)

DAY 7 (09 APRIL 2016)

Proceed to Dolomite Camp and check in for one night stay.

Game viewing. Rare and endangered species include the black-faced impala, which can be seen around Dolomite Camp, and the fleet footed cheetah. The plains are covered by large herds of springbok and zebra. The backdrop of the vast Etosha Pan makes game viewing in Etosha a unique experience.

Dolomite Camp

Etosha's new and exclusive Dolomite Camp opens up the restricted western side of the park to a limited number of visitors. Guests are accommodated in permanent luxury tents with an elevated view of the endless plains of Etosha National Park in Namibia. The wildlife has developed without human disturbance and rare species such as black rhino and black-faced impala have established themselves in the area. The area is rich in waterholes that attract elephant, rhino, leopard, lion, springbok, gemsbok and red hartebeest. The birdlife is prolific and the seasonal flowers of Dolomite Hill are a highlight for botanists.

Dolomite's guests have access to western Etosha through Galton Gate. Perched on the top of a little hill Dolomite Camp offers sublime view to complement the luxuriously appointed camp. The camp is unfenced allowing animals to roam freely between the tents and communal area. However, with personal escorts your safety is guaranteed at all times. The restaurant serves delicious and satisfying meals and the personnel will always greet you with a smile. A rim flow swimming pool, a curio shop and a viewing deck overlooking a prolific waterhole provide entertainment during the day, while the bar area is ideal to relax and socialize with other guests.



Dolomite Camp (Full Board including all meals and game viewing with your guides)

DAY 8 (10 APRIL 2016)

Proceed to Halali – game viewing with your guide.

Halali Resort

In an otherwise flat area Halali Camp is perched between a few hills and koppies. Thicker vegetation makes this popular with leopard, rhino and elephant. Situated halfway between Namutoni and Okaukuejo the Halali Rest Camp centrally located in close proximity of some of the most popular waterholes of the Etosha National Park. A short walk will take you to the camp's floodlit waterhole with excellent day and night game viewing.

'Halali' is the German word for the traditional ending of a hunt. The camp signifies the end of game hunting and the rise of eco-tourism in Namibia. Halali offers active guests the largest pool in the park and its strategic location between Namutoni and Okaukuejo makes it a great stopover for lunch, ice cream, a cool drink or just petrol.



Halali Resort in Double Rooms (Full Board including all meals and game viewing with your guides)

DAY 9 (11 APRIL 2016)

Game viewing in Etosha.

In the language of the Ovambo tribe, Etosha means 'great white place', a name passed on to the first Europeans to come across this "immense hollow", Sir Francis Galton and Charles Andersson in 1851, with the help of travelling Ovambo traders. The area was originally inhabited by the Heli/ om- people who were well known hunter gatherers and co- existed in harmony with huge herds of wildlife in the area. It was only in 1851 when the huge pan first became known to Europeans. Explorers Charles Andersson and Francis Galton reached a cattle post called Omutjamatunda which is today called Namutoni. The two explorers provided the first written account of the pan.

Halali Resort in Double Rooms (Full Board including all meals and game viewing with your guides)

DAY 10 (12 APRIL 2016)

Check out and set off for Windhoek, about 6 hours away. The guides will drop us at our hotel and bid you farewell. Check in to your hotel and enjoy the final dinner at the hotel this evening.

Kalahari Sands Hotel

Refurbished in 2004 and in the centre of Windhoek's bustling central business district, (CBD) is the renown 4-star Kalahari Sands Hotel and Casino. This is a good value destination, considering the amenities, facilities and level of comfort you can expect from a hotel of this class. This luxurious hotel is very conveniently located on Independence Avenue, with banks, restaurants and shops of every description in the adjoining and nearby shopping centres.

There is a full range of guest services and amenities, including concierge, baby sitting, barber/beauty shop, boutiques, coffee shop, florist, safe, jacuzzi, guest laundromat, laundry / dry cleaning service, paid on-site parking/security and a 24hr room and wake-up service.

The Dunes Restaurant and the Oasis bar lounge, with its terrace overlooking Independence Avenue, serves an all-day buffet and guests can also order from the 'a la carte' menu.



Kalahari Sands Hotel (Dinner, Bed & Breakfast)

DAY 11 (13 APRIL 2016)

Transfer to Windhoek Airport for your flight back home

BON VOYAGE!

PRICE PER PERSON SHARING: 4,295€ EARLY BIRD 30th NOVEMBER